

NO BOUNDARIES

The garden becomes part of the interior at Mexico City's glass-walled Design House...

DESIGN

OCTOBER 29TH, 2014

SEARCH



Design House in Mexico City is an annual project run by Design Week Mexico in which renowned interior gurus are let loose on a property to investigate an area of interest; this year it's **Esrawe Studio** looking at the relationship between the living spaces of a house and the garden. Landscape gardener Pedro Sanchez has prepared a lovely plot, but the question is how can it best be enjoyed from inside the house?

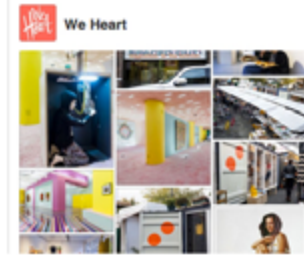
Esrawe Studio has removed the usual line-of-sight barriers – the exterior and interior walls – and replaced them with a “glass skin”. The garden, filled with aromatic plants and bushes, is now one of three areas intended to function as an organic whole, with the other two being a reading and contemplation area and a group entertaining area. This intervention retains pre-existing aspects of the house, such as the carved floral wall panelling, and artist **Omar Barquet** has embellished further with a painted flowering ivy design called Hedera that appears entwined with the carved sections.

@hesrauce

Esrawe Studio has removed the usual line-of-sight barriers – the exterior and interior walls – and replaced them with a “glass skin”. This intervention retains pre-existing aspects of the house, such as the carved floral wall panelling that artist Omar Barquet has embellished...



We Heart



We Heart

EDITORS PICKS



RELATED POSTS



POPULAR TAGS

- [Design \(2527\)](#)
- [Interiors \(1665\)](#)
- [Art \(1550\)](#)
- [Exhibitions \(895\)](#)
- [Food & Drink \(823\)](#)
- [Restaurants \(604\)](#)
- [Galleries \(584\)](#)
- [Photography \(462\)](#)
- [Hotels \(461\)](#)
- [Greater London \(458\)](#)

